

AGENDA SUPPLEMENT (1)

Meeting: Calne Area Board
Place: Calne Library and Hub
Date: Tuesday 11 September 2018
Time: 6.30 pm

The Agenda for the above meeting was published on 3rd September 2018. Additional documents are now available and are attached to this Agenda Supplement.

Please direct any enquiries on this Agenda to Stuart Figini, of Democratic Services, County Hall, Bythesea Road, Trowbridge, direct line 01225 718221 or email stuart.figini@wiltshire.gov.uk

Press enquiries to Communications on direct lines (01225)713114/713115.

This Agenda and all the documents referred to within it are available on the Council's website at www.wiltshire.gov.uk

6 **Policing in the Calne Area (Pages 1 - 10)**

DATE OF PUBLICATION: 17 th September 2018

Community Policing



One team

WILTSHIRE POLICE

Our purpose: To keep people safe and protect our communities



@wiltshirepolice



CONTENTS

- Policing Context and Demand
- Past and Present - Operational Policing Model
- Wiltshire North Community Policing Team
- Engaging in our Communities

WILTSHIRE POLICE

Our purpose: To keep people safe and protect our communities



@wiltshirepolice

TYPICAL DAILY DEMAND for Wiltshire Police

There will be approximately

1 officer

on duty for every 800
people living in the area



Officers will deal with:

30 violent crimes, **43** thefts,
10 burglaries, **7** car crimes and
61 anti social behaviour incidents

33 people
will be arrested by officers

Officers will issue:

4 cautions, **1** penalty notice for
disorder and **1** cannabis warning

Officers will carry out:

**8 stop
searches**



Respond to **8 reports**
of missing persons, four that are high or
medium risk

Answers **1,072**
calls for assistance, of
which 30% require
a response

Respond to approximately
10 incidents
associated with people with mental health
issues

Attend the scene of
**4 road traffic
collisions**
and **7 road
offences**



TYPICAL ONGOING DEMAND for Wiltshire Police

As well as reacting to calls we also undertake proactive work to safeguard the public, including...

Supporting more than

**1,000
families**

on the Troubled Families programme



Policing approximately

**12 organised
crime
groups**



Supporting victims of domestic abuse
through a monthly average of

**500
incidents**



Managing approximately

**1,107
sexual and violent
offenders** under a
multi-agency public
protection arrangement



NEW THREATS:



Child Sexual
Exploitation



Cyber crime
and fraud



Exploitation of
the vulnerable



Historic sex abuse

SETS DIRECTION:

- Police and Crime Plan
- National policing requirements
- Regional Control Strategy
- Assessment of threats, risks and harms

ENABLERS:

People and Culture, Leadership, Estates,
ICT, Financial Strategy

WILTSHIRE POLICE

Our purpose: To keep people safe and protect our communities



@wiltshirepolice



CONTROL STRATEGY

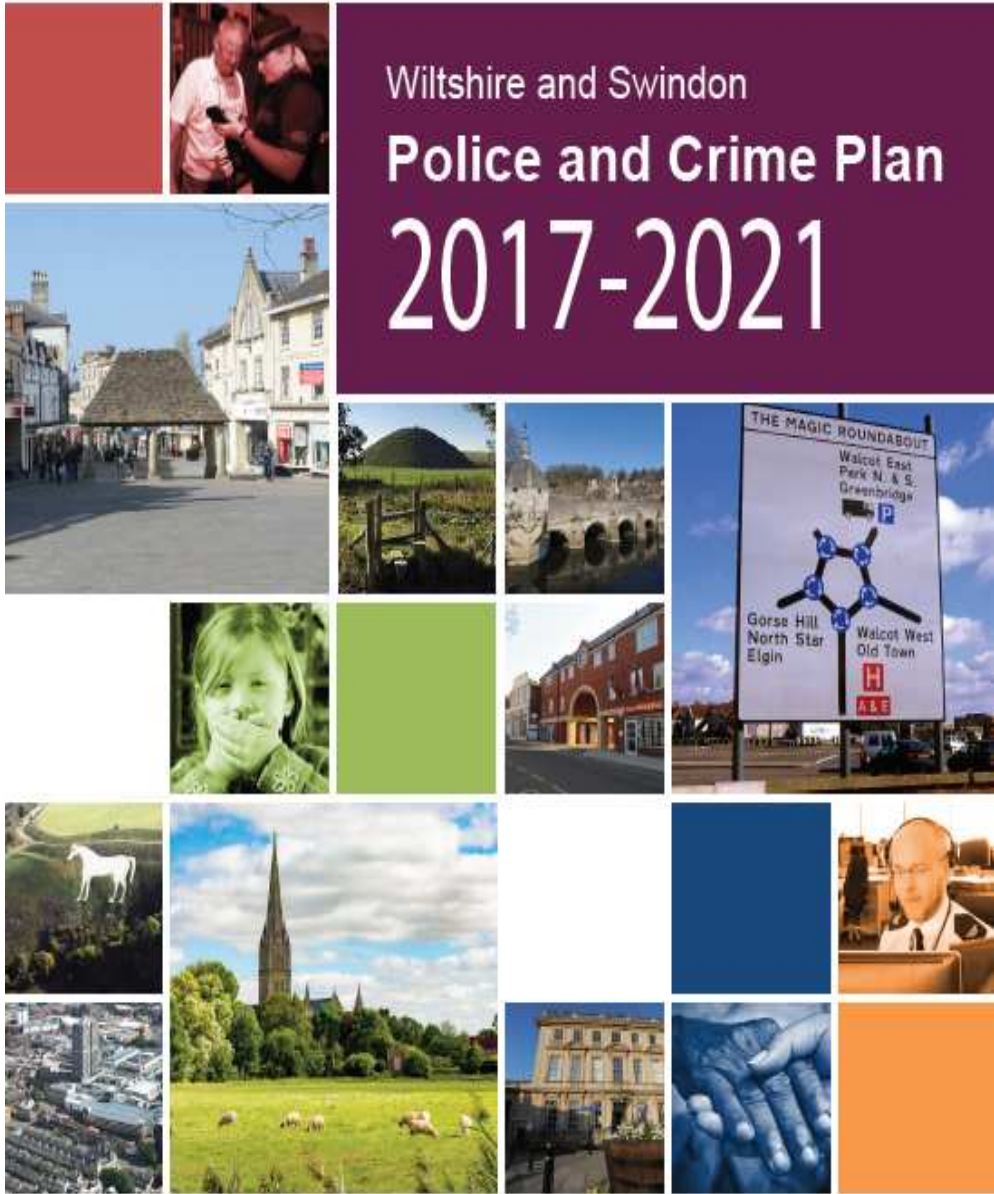


WILTSHIRE POLICE

Our purpose: To keep people safe and protect our communities



@wiltshirepolice



Wiltshire and Swindon
Police and Crime Plan
2017-2021

PRIORITY 1:
 Prevent crime and keep people safe

#TellAnguspcc
 #AskAnguspcc



PRIORITY 2:
 Protect the most vulnerable in society

#TellAnguspcc
 #AskAnguspcc



PRIORITY 3:
 Put victims, witnesses and communities at the heart of everything we do

#TellAnguspcc
 #AskAnguspcc



PRIORITY 4:
 Secure a trusted, quality and efficient police service

#TellAnguspcc
 #AskAnguspcc





HISTORY OF OPERATIONAL MODEL



Response Teams



Local Crime Teams



Neighbourhood Policing Teams

WILTSHIRE POLICE

Our purpose: To keep people safe and protect our communities



@wiltshirepolice




Community Policing

One team



WILTSHIRE POLICE

Our purpose: To keep people safe and protect our communities



@wiltshirepolice



CPTs AND AREAS

6 Community Policing Teams

Wiltshire North

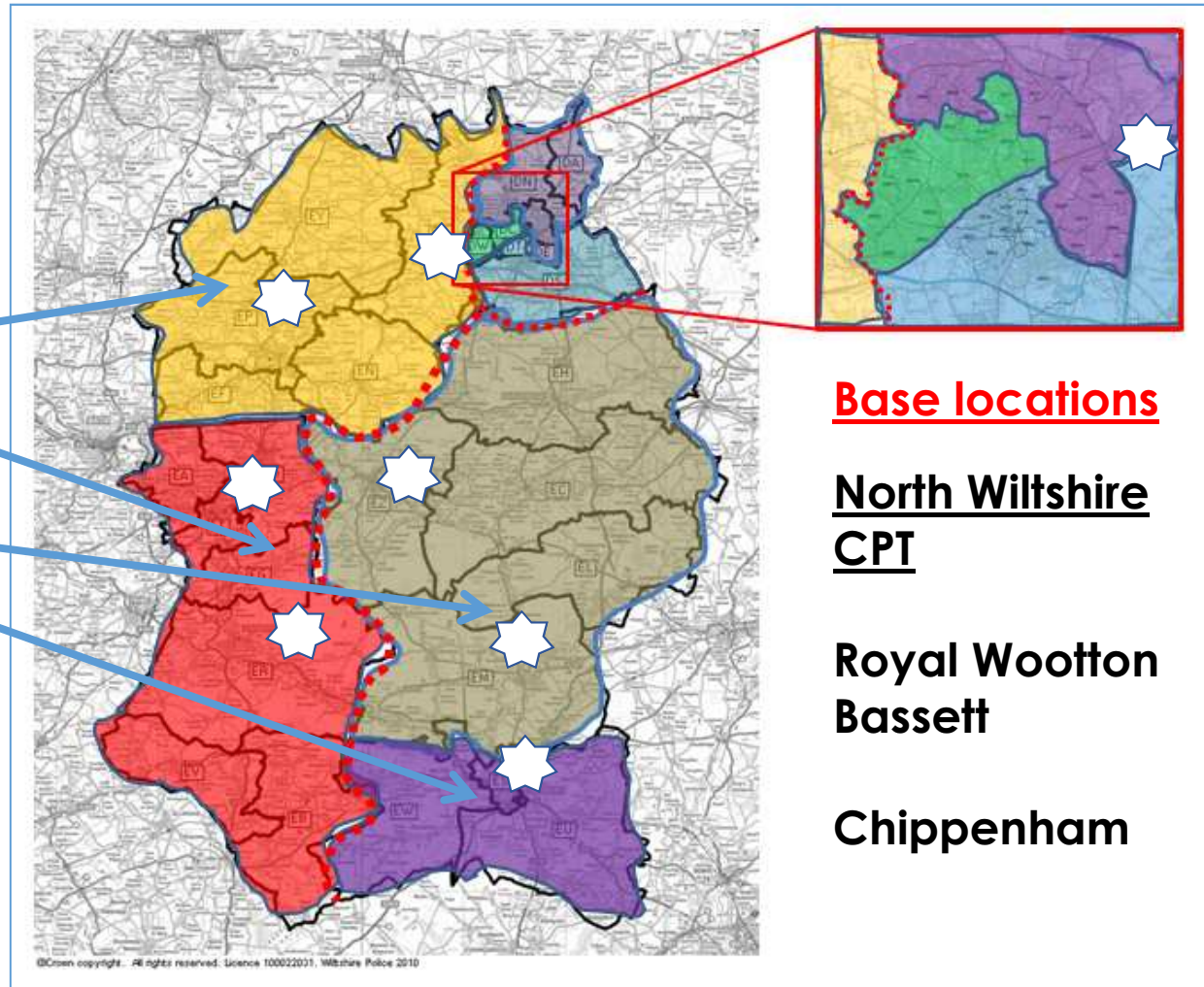
Wiltshire West

Wiltshire East

Wiltshire South

Swindon North

Swindon South



Base locations

**North Wiltshire
CPT**

**Royal Wootton
Bassett**

Chippenham

WILTSHIRE POLICE

Our purpose: To keep people safe and protect our communities



@wiltshirepolice



CPTs AND AREAS

- 5 Teams
- Operate 24/7
- Provide all uniform policing for North Wiltshire area from Chippenham and Royal Wootton Bassett
- Includes the towns of Chippenham, Corsham, Calne, RWB, Malmesbury, Cricklade and all surrounding villages
- Each team = 2 x Sergeants, 12 x PC's, 4 x PCSO's, 2 x LCI's
- 2 x Community Coordinators
- Supported by:

Community Tasking Team, CID, ARG, Roads Policing, Dogs, ASU, CSI

WILTSHIRE POLICE

Our purpose: To keep people safe and protect our communities



@wiltshirepolice

ANY QUESTIONS?



WILTSHIRE POLICE

Our purpose: To keep people safe and protect our communities



@wiltshirepolice